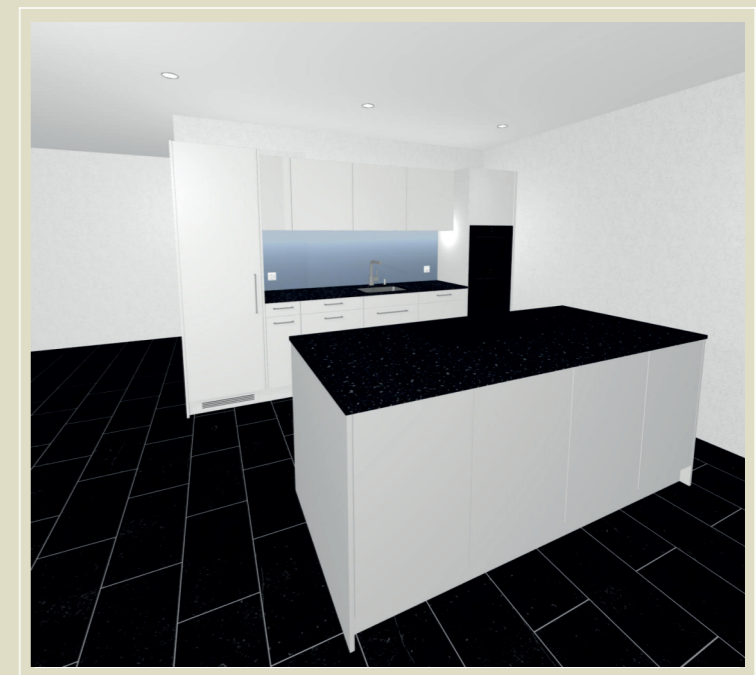
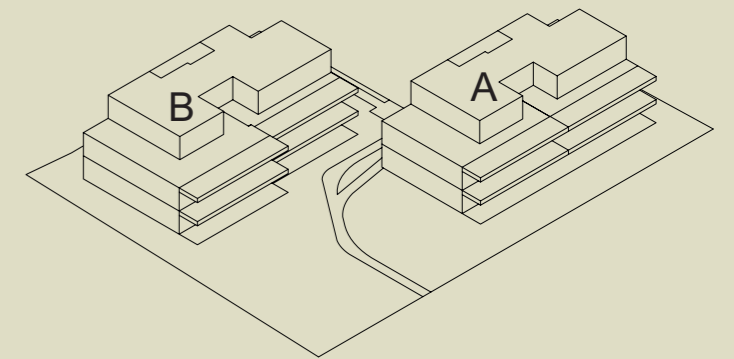




Wohnüberbauung Oberzelgli  
10 moderne Eigentumswohnungen  
Oberzelgstrasse 16 + 18 | 5612 Villmergen

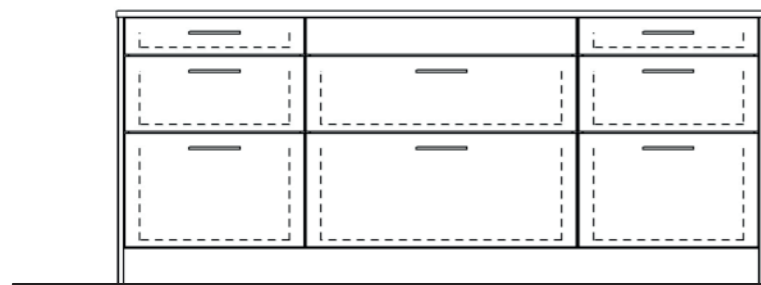
# Küchen

Wohnungen A2; A4; B2; B4

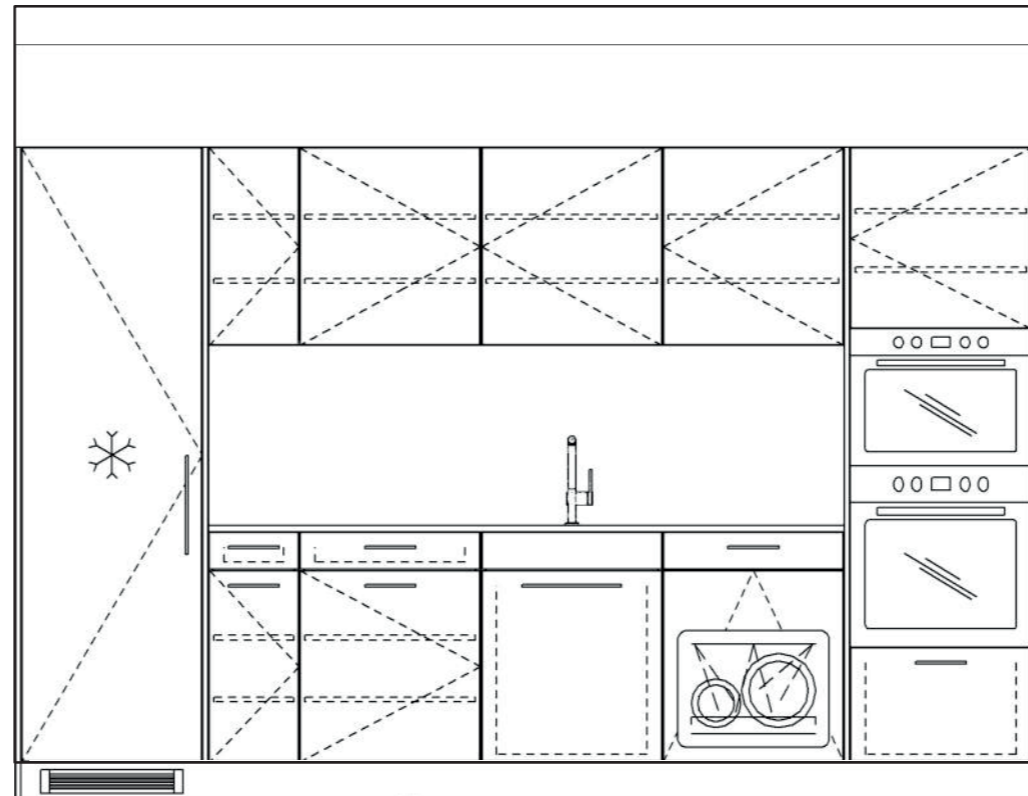


0 10 20 50 100cm

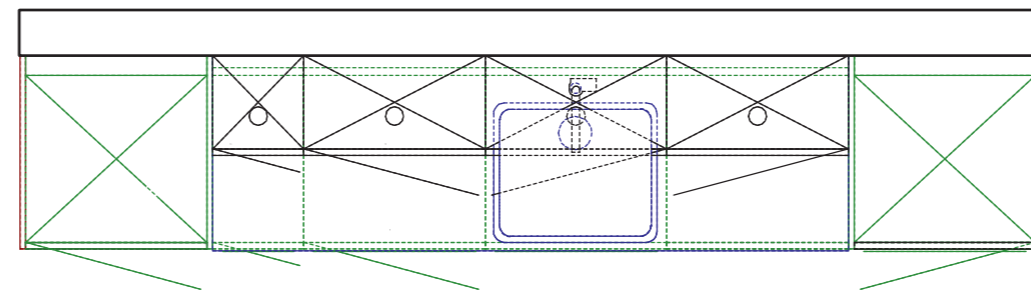
Massstab 1:25



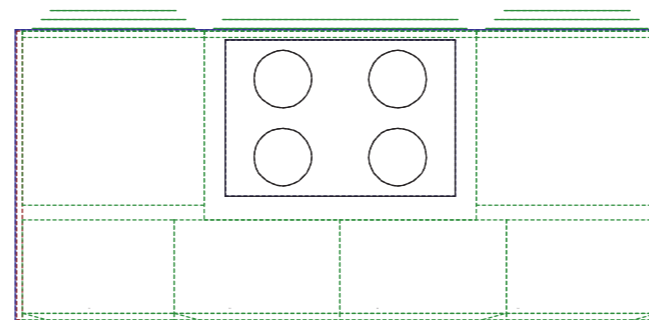
Ansicht B



Ansicht A

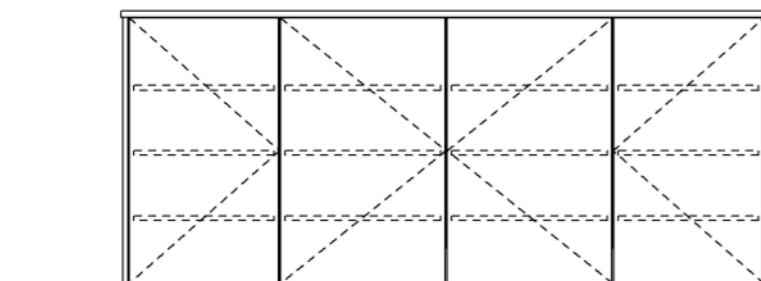


A  
B



C

Grundriss



Ansicht C



Grundeigentümer, Bauherr und Architektur  
Krewo Immobilien AG  
Espühelstrasse 2a | CH 5442 Fislisbach  
056 250 04 00 | info@krewo.ch